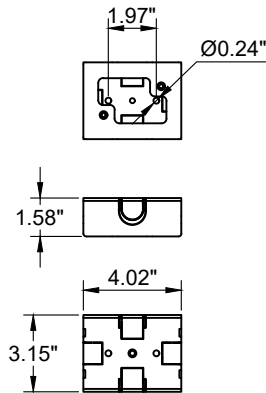


INSTALLATION AND SERVICE MANUAL

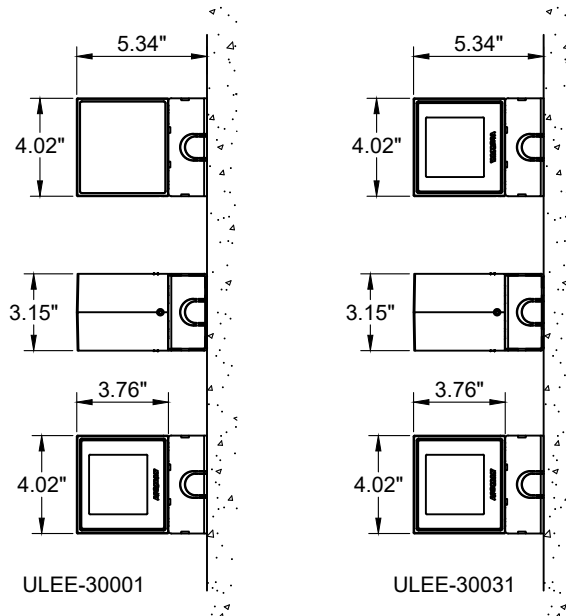
For Installation of Leeds 1 & 2 Surface Wall light With Surface Conduit Decorative Trim
Model. ULEE-30001-SCE & ULEE-30031-SCE

Product drawing (dimensions)

SUITABLE FOR WET LOCATIONS

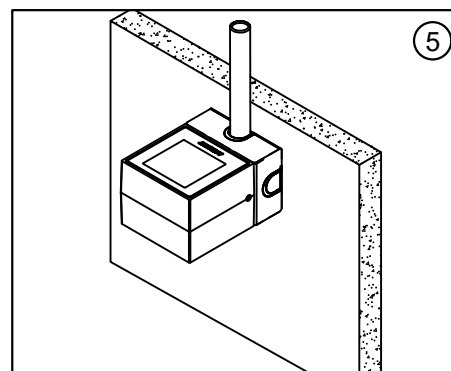
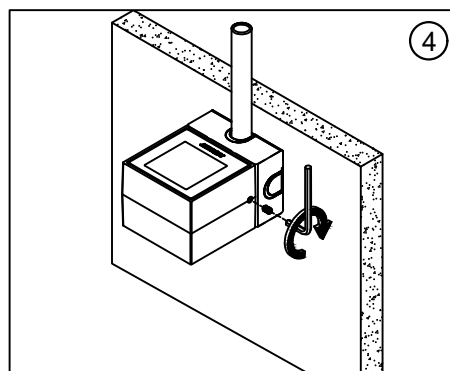
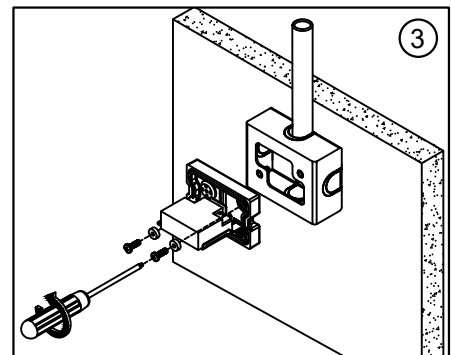
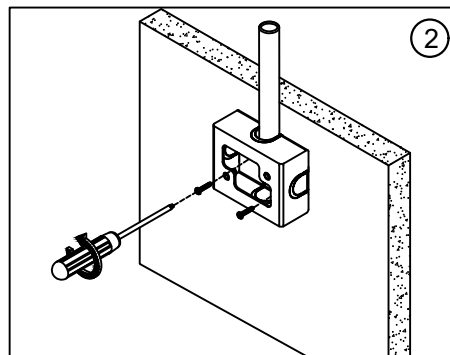
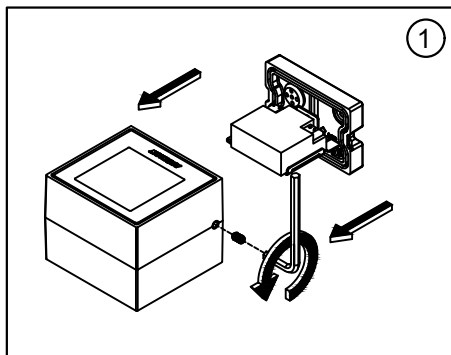


MOUNTING DETAIL
SURFACE CONDUIT
DECORATIVE TRIM ASSEMBLY



ULEE-30001

ULEE-30031



Notice to installer :

1. **WIRING INSTRUCTIONS Warning :** RISK OF FIRE AND ELECTRICAL SHOCK. : FIXTURE MUST BE INSTALLED BY A QUALIFIED ELECTRICIAN ONLY>FIXTURE IS INTENDED FOR INSTALLATION IN ACCORDANCE WITH THE NATIONAL ELECTRICAL CODE, LOCAL AND FEDERAL CODE SPECIFICATIONS. DISCONNECT POWER BEFORE SERVICING.
2. This fixture has a **VOLTAGE SPECIFIC BALLAST**, Check that the supply voltage is the same as the installed ballast voltage.

Ligman Lighting USA

7144 NE Progress Court, Hillsboro
Oregon, 97124, USA
Tel : 503 645 0500 | Fax : 503 645 8100